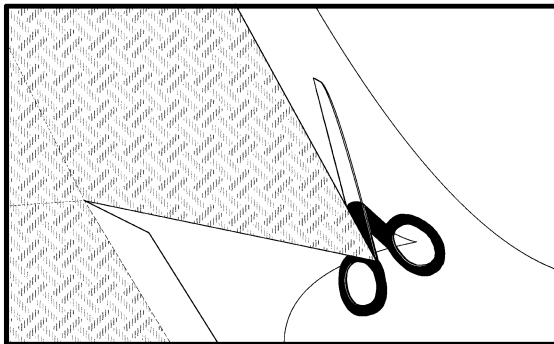


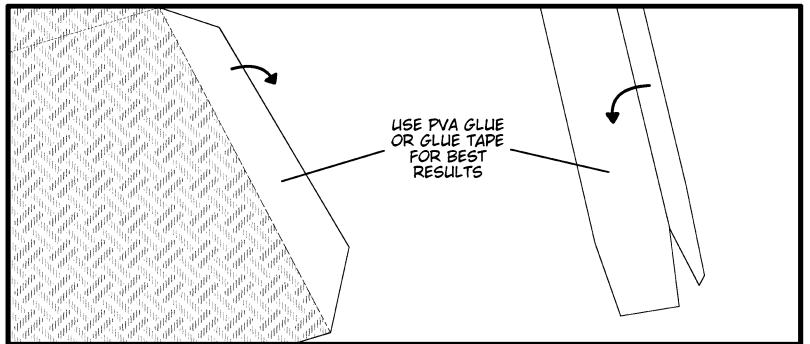
LOTOCRAFT

02 - Loti Basket

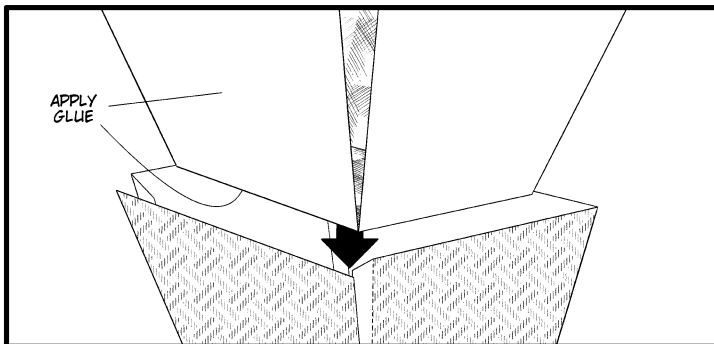
© 2011 TROY CHIN / DREARY WEARY COMICS



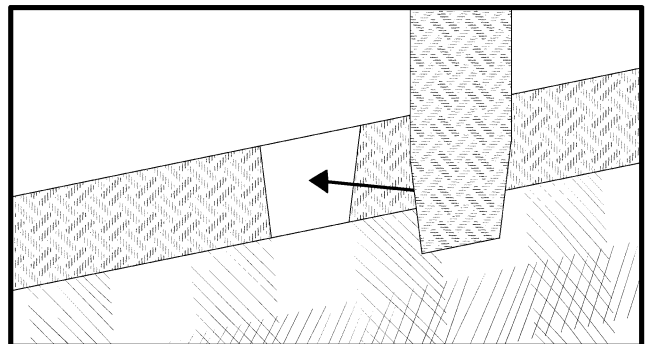
1. CUT OUT PARTS ALONG THIN OUTLINE



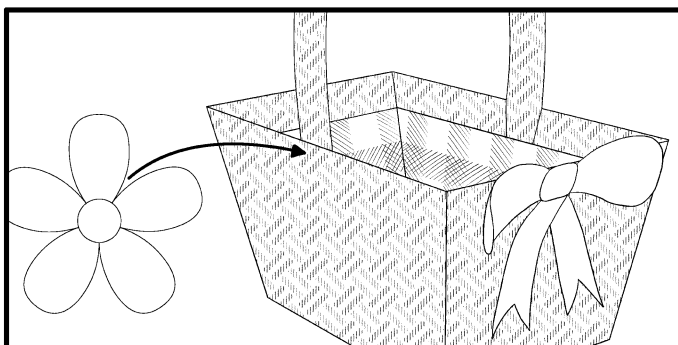
2. FOLD ALONG DOTTED LINES AND APPLY GLUE TO TABS



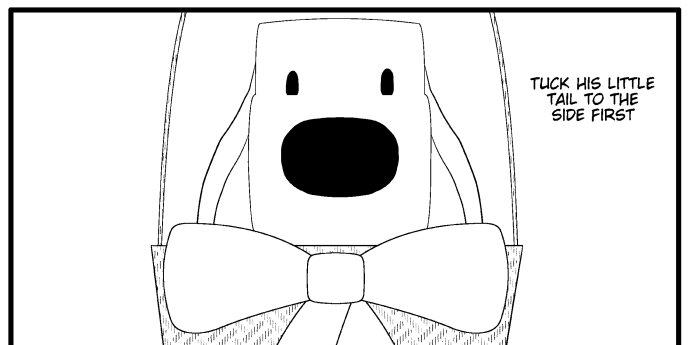
3. FASTEN INNER AND OUTER BASKET WITH GLUE



4. ATTACH HANDLE TO INNER BASKET MARKINGS

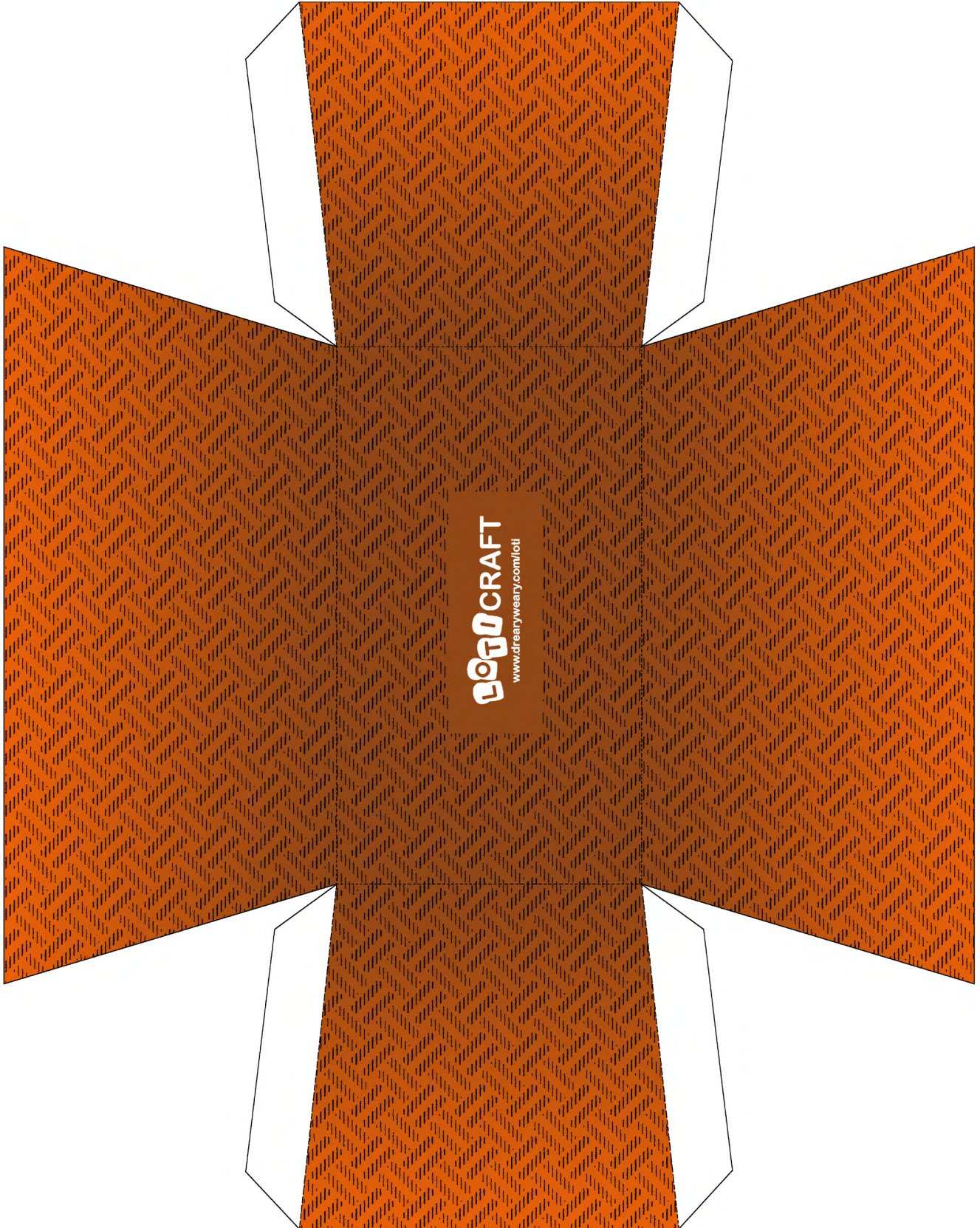


5. ATTACH ACCESSORIES ANY WAY YOU WANT

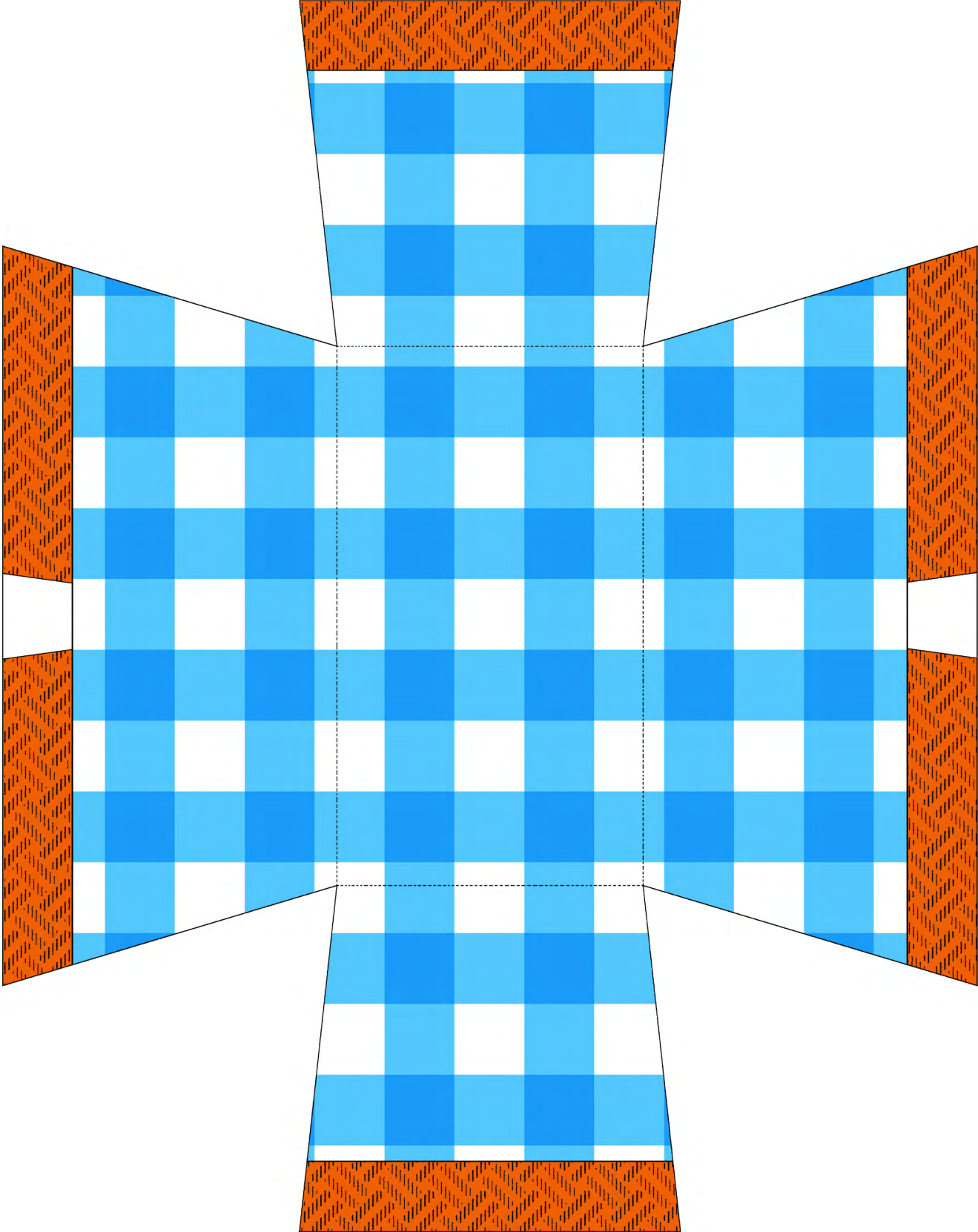


6. PLACE LOTI INSIDE!

Outer Basket



Inner Basket



Accessories & Handle

